

## Contact information

St. Maarten Medical Center

### Dialysis department

Welgelegen Road 30

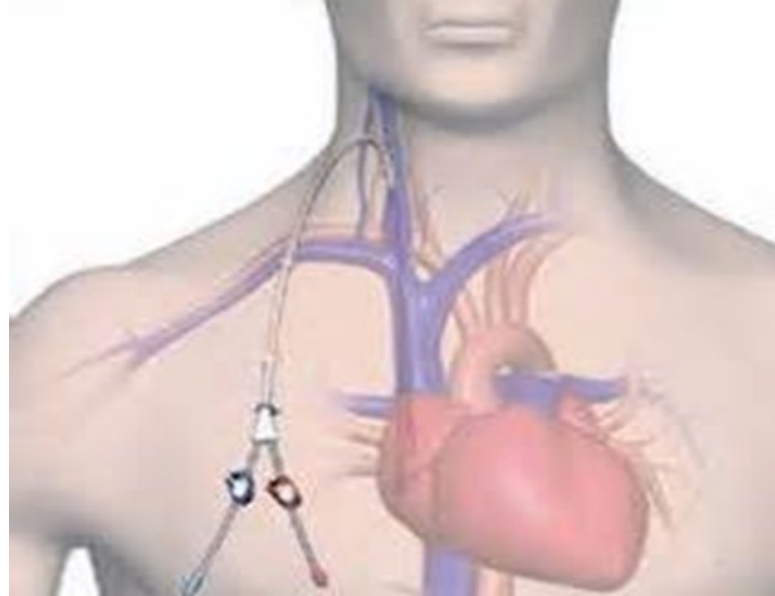
Cay Hill  
St. Maarten

Tel: +1 (721) 543-1111 ext 1420, 1601

Fax: +1 (721) 543-0116

Email: [dialysis@smmc.sx](mailto:dialysis@smmc.sx)

Web: [www.smmc.sx](http://www.smmc.sx)



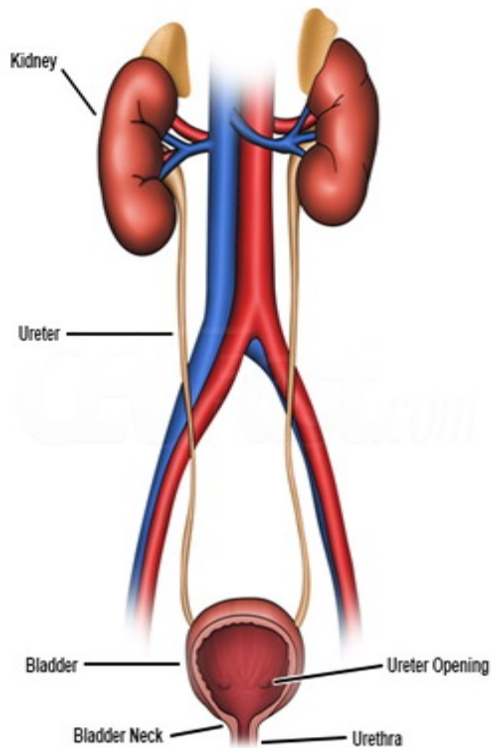
**SAFETY**  
**HEALTH**  
**SATISFACTION**

*The pillars defining our quality care*

## *Guidelines for Central Venous Catheter Care at Home*

*We Care Together!*

A publication of SMMC - January 2017



Anything that touches the CVC exit site of the CVC and anything that goes into the CVC must be sterile.

The following guidelines are helpful in preventing infection:

- ◆ Do not let the CVC exit site get wet until it is well healed. You may shower 72 hours after the catheter has been inserted.
- ◆ When bathing or showering, cover the site with a waterproof material, such as household plastic wrap, over the dressing.
- ◆ Do not submerge the CVC site below the level of water in a bathtub, hot tub, or swimming pool.
- ◆ Never touch or open the CVC dressing when you feel like scratching.
- ◆ Never use scissors, pins, or sharp objects near the CVC or other tubing. The catheter could be damaged easily.
- ◆ Inspect the bandage for any drainage, bleeding and odor.

## Problem-solving for central venous catheters:

EMERGENCY	RESPONSE
Accidental removal of the CVC from the chest	Apply pressure to the exit site and chest area above it with a gauze dressing or a clean wash cloth. Go to Emergency Room.
Drainage, swelling, or bleeding on the bandage	Notify the doctor or Dialysis Nurse. Go to Emergency Room.
Fever of 38 °C or greater and/or chills	Notify the Dialysis Nurse or go to Emergency Room.
CVC is displaced, CVC is longer, a "cuff" is visible at exit site	DO not use the CVC. Tape the CVC to your skin if it seems loose. Notify the nurse or go to Emergency Room.
Loose suture at exit site	Tape the CVC to your skin. Notify your doctor or nurse during routine business hours.
Damage to the CVC, such as a hole or crack in the tubing	Immediately clamp the CVC between the hole and your chest. If necessary, pinch or fold it over to clamp it. Cover the hole or crack with sterile gauze. Notify the Dialysis Nurse or go to the Emergency Room.